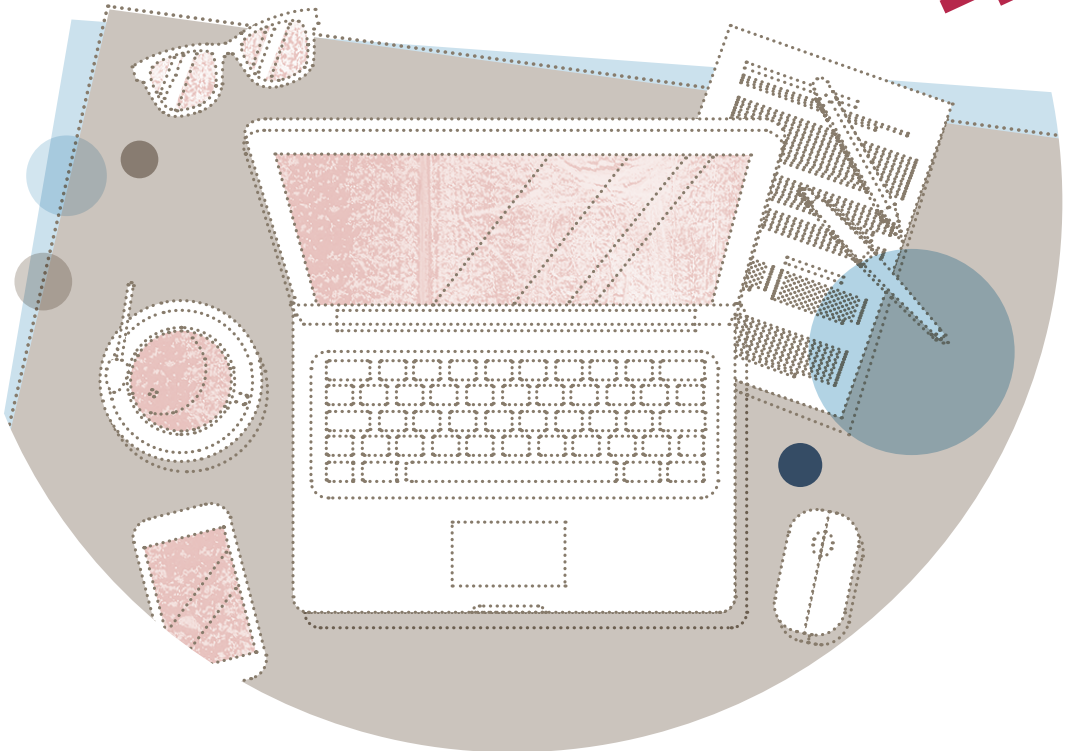


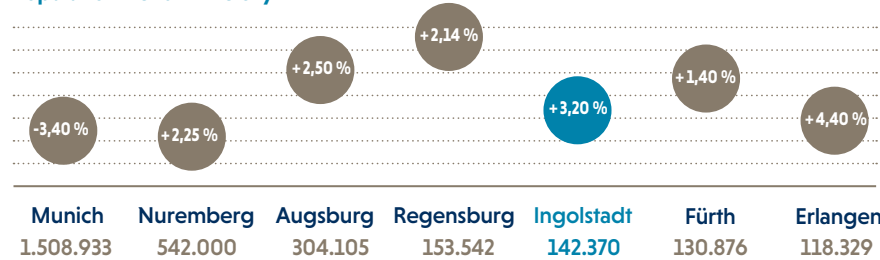
Business location **INGOLSTADT**

AT A GLANCE



DEMOGRAPHY

Population trend in the city



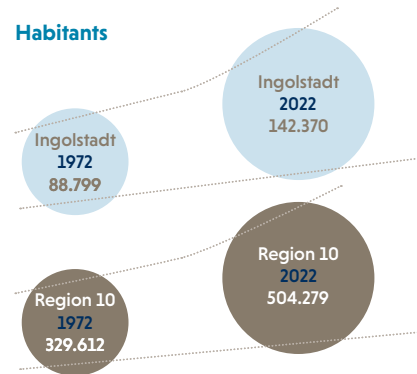
Source: Bayerisches Landesamt für Statistik und Datenverarbeitung
a comparison of the years 2021 – 2022

Demographic group forecast 2022 to 2040 by age group

	2022	2040
0 - 18 years	26.700	27.300
19 - 25 years	9.900	10.300
25 - 40 years	33.500	31.500
40 - 60 years	37.600	39.600
from 60 years	34.300	40.600
Total	142.000	149.300

Source: Bayerisches Landesamt für Statistik und Datenverarbeitung Status as of: 2022

Habitants



Source: Stadt Ingolstadt,
Sachgebiet Statistik und Stadtforschung

BUSINESS

Handicraft businesses

Construction industry	123
Development industry	454
Trade for commercial use	235
Automotive industry	85
Food industry	40
Health industry	59
Personal services	558
All trades	1554

Source: Handwerkskammer für München und Oberbayern Status as of: Dec. 2022

IHK member businesses Ingolstadt

Total number	7.790
of small businesses	5.022
recorded in the commercial register	2.768

Source: Industrie- und Handelskammer für München und Oberbayern (IHK) Status as of: Dec. 2022

Taxes

Trade tax rate	400
Property tax A	350
Property tax B	460

Source: Stadt Ingolstadt
Status as of: 2022

Retail Ingolstadt

Retail purchasing power	911,1 million €
Retail purchasing power per inhabitant	6.400€
Turnover in retail	8.639 €
Retail purchasing power index	110,9 €
Retail turnover index	177,3 €
Retail centrality index	159,8 €

Source: GfK
Status as of: 2021

Tourism statistics

Arrival of visitors	160.828
Overnight visitors	294.821
Change in comparison to the previous year	- 0,26 %
Establishments opened	44
Beds available	3.424
Average length of stay	1,8
Occupancy of beds available	40,8 %

Source: Bayerisches Landesamt für Statistik und Datenverarbeitung Status as of: 2022

LABOR MARKET

Employees subject to social security at the workplace

Agriculture, forest management, fishing	126
Production industry	50.611
Trade, hospitality industry, transport	13.915
Company service providers	16.758
Public and private service providers	19.975
Employees subject to social security Ingolstadt city Growth (2022 - 2020)	104.062 -0,03 %
Employees subject to social security Ingolstadt region Growth (2022 - 2020)	222.662 1,5 %

Source: Bayerisches Landesamt für Statistik und Datenverarbeitung Status as of: Dec 2022

Unemployment rate

Ingolstadt city	3,5 %
Ingolstadt region	2,7 %
Bavaria	3,4 %
Germany	5,7 %

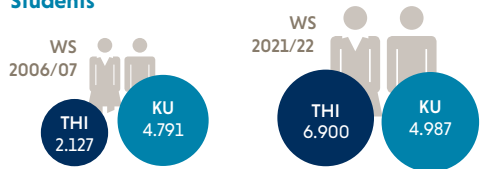
Source: Bundesagentur für Arbeit Status as of: Mar. 2022

Commuter traffic

Employees by place of residence	62.991
Employees by place of work	103.708
Number of commuters	40.652

Source: Bundesagentur für Arbeit Status as of: 2021

Students



Source: Stadt Ingolstadt, Sachgebiet Statistik und Stadtforschung

Apprentices



Source: IHK, HWK Status as of: Dec. 2022



IFG

INGOLSTADT.DE/IFG