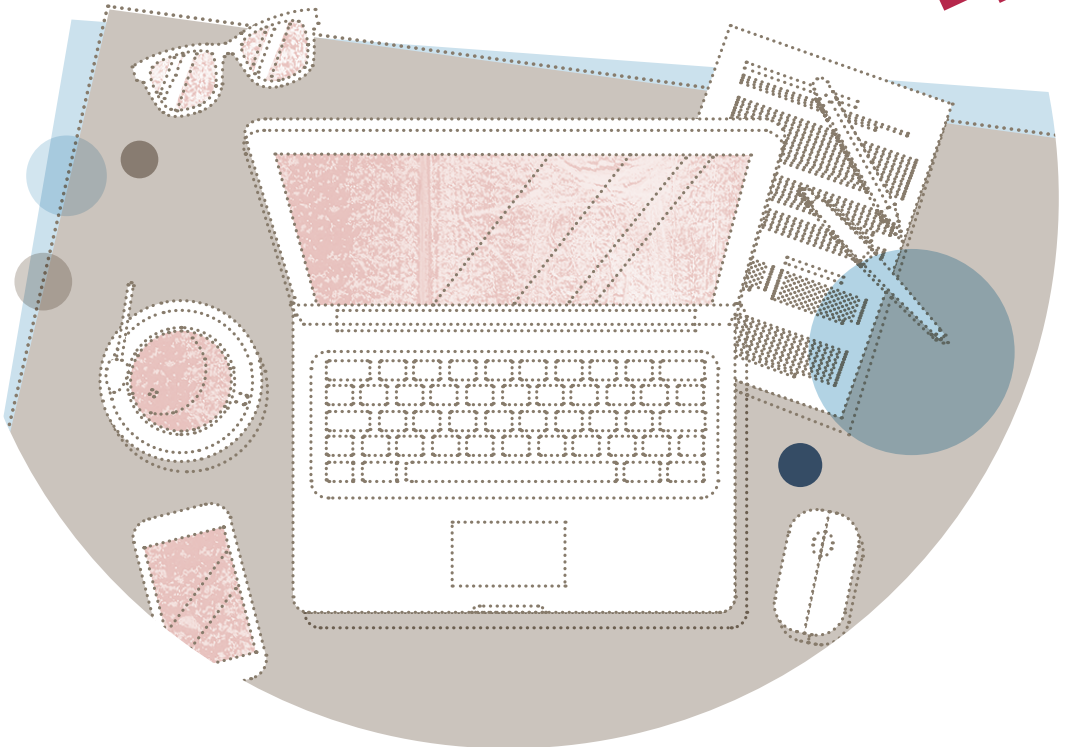


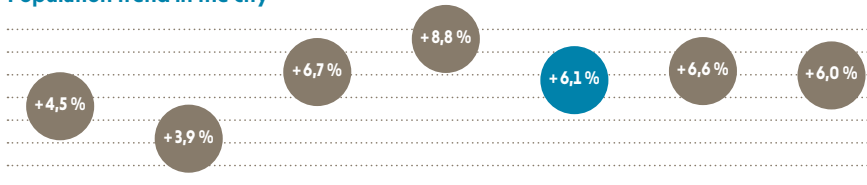
Business location **INGOLSTADT**

**AT A GLANCE**



# DEMOGRAPHY

## Population trend in the city



Munich	Nuremberg	Augsburg	Regensburg	Ingolstadt	Fürth	Erlangen
1.471.508	518.365	295.135	152.610	136.981	127.748	111.962

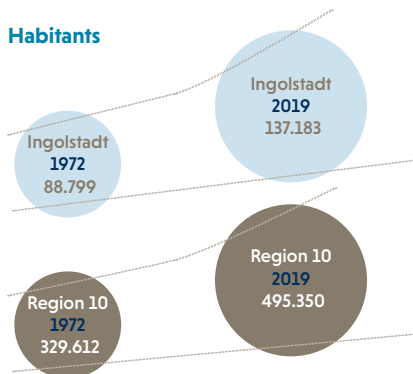
Source: Bayerisches Landesamt für Statistik und Datenverarbeitung  
a comparison of the years 2013 – 2018

## Demographic group forecast 2018 to 2038 by age group

	2018	2038
0 - 18 years	24.300	27.200
19 - 25 years	9.700	9.600
25 - 40 years	32.900	30.400
40 - 60 years	37.200	39.300
from 60 years	32.900	40.500
<b>Total</b>	<b>137.000</b>	<b>147.000</b>

Source: Bayerisches Landesamt für Statistik und Datenverarbeitung  
Status as of: 2018

## Habitants



Source: Stadt Ingolstadt,  
Sachgebiet Statistik und Stadtforschung

# BUSINESS

## Handicraft businesses

Construction industry	130
Development industry	446
Trade for commercial use	203
Automotive industry	81
Food industry	34
Health industry	55
Personal services	527
All trades	1.476

Source: Handwerkskammer für München und Oberbayern  
Status as of: June 2019

## Retail Ingolstadt

Retail purchasing power	873,0 million €
Retail purchasing power per inhabitant	6.455 €
Turnover in retail	8.914 €
Retail purchasing power index	109,2 €
Retail turnover index	174,4 €
Retail centrality index	159,8 €

Source: GfK  
Status as of: 2019

## IHK member businesses Ingolstadt

Total number	7.790
of small businesses	5.022
recorded in the commercial register	2.768

Source: Industrie- und Handelskammer für München und Oberbayern (IHK)  
Status as of: 2018

## Taxes

Trade tax rate	400
Property tax A	350
Property tax B	460

Source: Stadt Ingolstadt  
Status as of: 2019

## Tourism statistics

Arrival of visitors	333.991
Overnight visitors	558.567
Change in comparison to the previous year	- 0,26 %
Establishments opened	47
Beds available	3.702
Average length of stay	1,7
Occupancy of beds available	40,8 %

Source: Bayerisches Landesamt für Statistik und Datenverarbeitung  
Status as of: 2019

# LABOR MARKET

## Employees subject to social security at the workplace

Agriculture, forest management, fishing	129
Production industry	55.601
Trade, hospitality industry, transport	15.005
Company service providers	18.633
Public and private service providers	18.163
Employees subject to social security Ingolstadt city	107.531
Growth (compared to previous year)	0,4 %
Employees subject to social security Ingolstadt region	225.998
Growth (compared to previous year)	1,5 %

Source: Bayerisches Landesamt für Statistik und Datenverarbeitung  
Status as of: 2019

## Unemployment rate

Ingolstadt city	2,8 %
Ingolstadt region	1,8 %
Bavaria	2,8 %
Germany	5,0 %

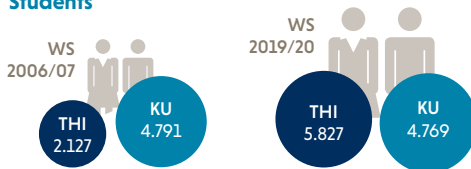
Source: Bundesagentur für Arbeit  
Status as of: 2019

## Commuter traffic

Employees by place of residence	62.977
Employees by place of work	107.531
Number of commuters	44.554

Source: Bundesagentur für Arbeit  
Status as of: 2019

## Students



Source: Stadt Ingolstadt,  
Sachgebiet Statistik und Stadtforschung

## Apprentices



Source: IHK, HWK  
Status as of: 2019



# IFG

INGOLSTADT-IFG.DE